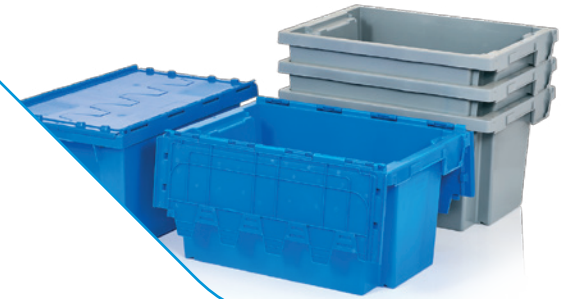


NEW PRODUCT FROM ENKO

ATTACHED LID CONTAINER

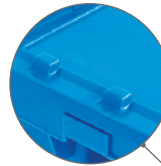
For storage and distribution of:

- high-value items
- medical supplies and pharmaceuticals
- cosmetics
- automotive and spare parts
- retail items
- e-commerce orders

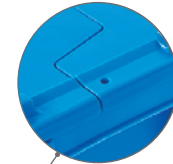


72% SPACE SAVINGS

60 cm



STABLE STACKING



SECURITY SEAL



LABEL HOLDER



ADVERTISING OPTIONS

www.enkoplastics.com |  [EnkoPlasticsLtd](https://www.facebook.com/EnkoPlasticsLtd)

Global Sales Department | phone: +359 889929469 | e-mail: shon.adams@enkoplastics.com

 **ENKO**
PLASTICS



6431

External dimensions 600x400x300 mm
Internal dimensions 490x345x270 mm



Weight 3.000 kg ±5%
Material PP



6430

TUB WITHOUT LID

External dimensions 600x400x300 mm
Internal dimensions 490x345x270 mm
Weight 2.200 kg ±5%
Material PP